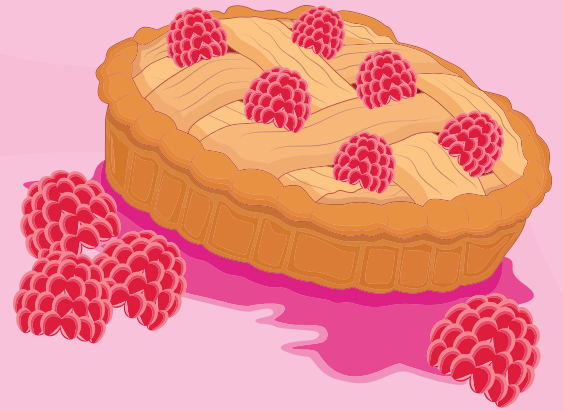


Raspberry Pie Craft – Paper Plate Pies

Materials:

- Paper plate (plain white or tan)
- Pink or red tissue paper (for pie filling)
- Tan or brown construction paper (for crust)
- Scissors
- Glue stick or school glue
- Red pom-poms, paper circles, or buttons (for raspberries)
- Optional: cotton balls or white pom-poms (for “whipped cream”)



Instructions:

Make the Pie Base:

- Cut a circle of red or pink tissue paper to fit the center of the plate.
- Glue it in the middle to be the “raspberry filling.”

Add the Crust:

- Cut thin strips of tan construction paper.
- Arrange them in a crisscross “lattice” pattern over the tissue paper.
- Glue down the edges of each strip.

Add Raspberries:

- Glue on red pom-poms, buttons, or circles to represent juicy raspberries on top of the pie.

Optional Whipped Cream:

- Add a cotton ball or white pom-pom in the center as a whipped cream dollop!

